

Official Boxscore *** FINAL ***

Date: 03-17-93 Site:BOYS STATE TOURNEY GAME 2

VISITORS (Last Name, First)

NO.	KNOTT COUNTY CENTRAL	Tot FG		3-POINT		FT		Rebounds			PF	TP	A	TO	BLK	S	TIME
		FG	FGA	FG	FGA	FT	FTA	OFF	DEF	TOT							
24	COUCH, RONDEL	3	6	0	1	2	4	0	10	10	2	8	2	2	1	2	35:00
44	SLONE, DAVID	2	4	0	0	1	2	0	5	5	4	5	0	1	0	0	20:42
04	CODY, GEOFF	6	16	0	0	8	12	1	6	7	4	20	0	3	0	0	35:00
12	COUCH, KEVIN	1	4	1	1	0	2	3	5	8	3	3	5	2	0	1	24:43
14	AMBURGEY, BYRON	5	13	0	2	4	7	3	5	8	3	14	3	2	0	2	35:00
34	HALL, SHAWN	5	6	0	0	3	6	0	1	1	2	13	0	0	0	0	14:18
20	GIBSON, RYAN	0	0	0	0	1	4	0	2	2	0	1	2	0	0	1	10:17
TEAM REBOUNDS (INCLUDED IN TOTALS)								3	1	4							
TOTALS		22	49	1	4	19	37	10	35	45	18	64	12	10	1	6	175
TOTAL FG 1st HALF 3/12 25.0%				2nd HALF 19/37 51.4% GAME						22/49 44.9% GAME						DEADBALL	
3-POINT FG 1st HALF 0/1 0.0%				2nd HALF 1/3 33.3% GAME						1/4 25.0% GAME						REBOUNDS 6	
FREE THROWS 1st HALF 1/4 25.0%				2nd HALF 18/33 54.5% GAME						19/37 51.4%							

HOME (Last Name, First)

NO.	CONNER	Tot FG		3-POINT		FT		Rebounds			PF	TP	A	TO	BLK	S	TIME
		FG	FGA	FG	FGA	FT	FTA	OFF	DEF	TOT							
04	FRYMAN, TROY	6	10	0	0	8	13	5	13	18	5	20	1	1	0	0	34:47
22	PITZER, MIKE	2	14	1	4	0	0	2	0	2	5	5	1	2	0	1	24:22
50	RICHARDSON, D.	5	9	0	0	4	6	3	4	7	5	14	0	1	3	2	20:06
12	HURST, JASON	4	13	2	6	3	4	2	5	7	4	13	2	4	0	1	31:59
24	BURKLO, GREG	2	11	1	8	0	0	0	3	3	2	5	0	0	0	1	29:02
34	OSBORNE, ERIC	0	2	0	0	0	0	0	3	3	2	0	1	1	0	0	10:58
20	LAWS, BRANDON	1	7	0	2	0	0	1	0	1	3	2	2	1	1	0	21:09
54	BOWLING, JOHN	0	0	0	0	0	0	0	0	0	0	0	0	0	0	0	2:29
30	COOK, MIKE	0	0	0	0	0	0	0	0	0	0	0	0	0	0	0	0:8
TEAM REBOUNDS (INCLUDED IN TOTALS)								1	2	3							
TOTALS		20	66	4	20	15	23	14	30	44	26	59	7	10	4	5	175
TOTAL FG 1st HALF 4/14 28.6%				2nd HALF 16/52 30.8% GAME						20/66 30.3% GAME						DEADBALL	
3-POINT FG 1st HALF 2/6 33.3%				2nd HALF 2/14 14.3% GAME						4/20 20.0% GAME						Rebounds 5	
FREE THROWS 1st HALF 1/2 50.0%				2nd HALF 14/21 66.7% GAME						15/23 65.2%							

OFFICIALS: LYMAN BROWN, J. R. SPALDING, ALT. J. MALLORY SCORE BY PERIODS
 Technicals: None KNOTT COUNTY CENTRAL 7 19 18 10 10 = 64
 CONNER 11 13 17 13 5 = 59

Attendance: 11,450
 COMMENTS: POINTS OFF TURNOVERS SECOND CHANCE POINTS
 KNOTT COUNTY CENTRAL 6 CONNER 4 KNOTT COUNTY CENTRAL 12 CONNER 19
 Produced by the KHSAA Sweet Sixteen Stat Crew with FINAL III - a Product of LEXICON SPORTS™

KNOTT COUNTY CENTRAL "PATRIOTS" vs CONNER "COUGARS"
1st Half Play by Play

PAGE : 1

Tip off at 2:30 P.M. on 03/17/93 at BOYS STATE TOURNEY GAME 2
Produced by the KHSAA Sweet Sixteen Stat Crew with FINAL III - a Product of LEXIC

Player	Team	CONNER		
FRYMAN, TROY, PITZER, MIKE, RICHARDSON, D., HURST, JASON, BURKLO, GREG				
Ball to COUGARS				
1-1	100%	1-1	100%	Layup Off Fast Break by FRYMAN, TROY
1-2	50.0%	1-2	50.0%	HURST, JASON, 2 Free Throws missed 1st made 2nd
1		1		Foul on RICHARDSON, D.
1-1	100%	2-5	40.0%	6 ft Lane Jump shot by RICHARDSON, D.
2		2		Foul on RICHARDSON, D.
Sub In: OSBORNE, ERIC Out: RICHARDSON, D.				
1-1	100%	3-8	37.5%	3 pt 22 ft Left Angle Jump shot by HURST, JASON
Sub In: LAWS, BRANDON Out: BURKLO, GREG				
1-2	50.0%	4-10	40.0%	3 pt 21 ft Right Side Jump shot by BURKLO, GREG
1		1		Assist by HURST, JASON
Sub In: LAWS, BRANDON Out: BURKLO, GREG				
1		3		Foul on PITZER, MIKE
Sub In: BURKLO, GREG Out: PITZER, MIKE				

Time	Score	KNOTT COUNTY CENTRAL	Player	Team
COUCH, RONDEL, SLONE, DAVID, CODY, GEOFF, COUCH, KEVIN, AMBURGEY, BYRON				
1 7:56	*2-0			
1 7:25		Foul on COUCH, KEVIN	1	1
1 7:25	*3-0			
1 7:15				
1 6:56	3-2*	14 ft Lane Turnaround by CODY, GEOFF	1-1	100% 1-4 25.0%
		Assist by COUCH, RONDEL	1	1
1 6:42	3-4*	4 ft Lane Bank by CODY, GEOFF	2-2	100% 2-5 40.0%
		Assist by COUCH, KEVIN	1	2
1 6:29		Foul on AMBURGEY, BYRON	1	2
1 6:02		Foul on SLONE, DAVID	1	3
1 5:49	*5-4			
1 4:49				
1 4:49	5-5*	AMBURGEY, BYRON, 2 Free Throws missed 1st made 2nd	1-2	50.0% 1-2 50.0%
1 4:49				
1 3:58	*8-5			
1 3:18	8-7*	2 ft Lane Driving by CODY, GEOFF	3-6	50.0% 3-9 33.3%
1 2:32	*11-7			
1 1:34				
1 1:13				
1 1:13		COUCH, KEVIN, 2 Free Throws missed both	0-2	00.0% 1-4 25.0%
1 1:13				
1 1:13		Sub In: HALL, SHAWN Out: SLONE, DAVID		

Official Boxscore * OFFICIAL FIRST HALF *

Date: 03-17-93 Site:BOYS STATE TOURNEY GAME 2

VISITORS (Last Name, First)

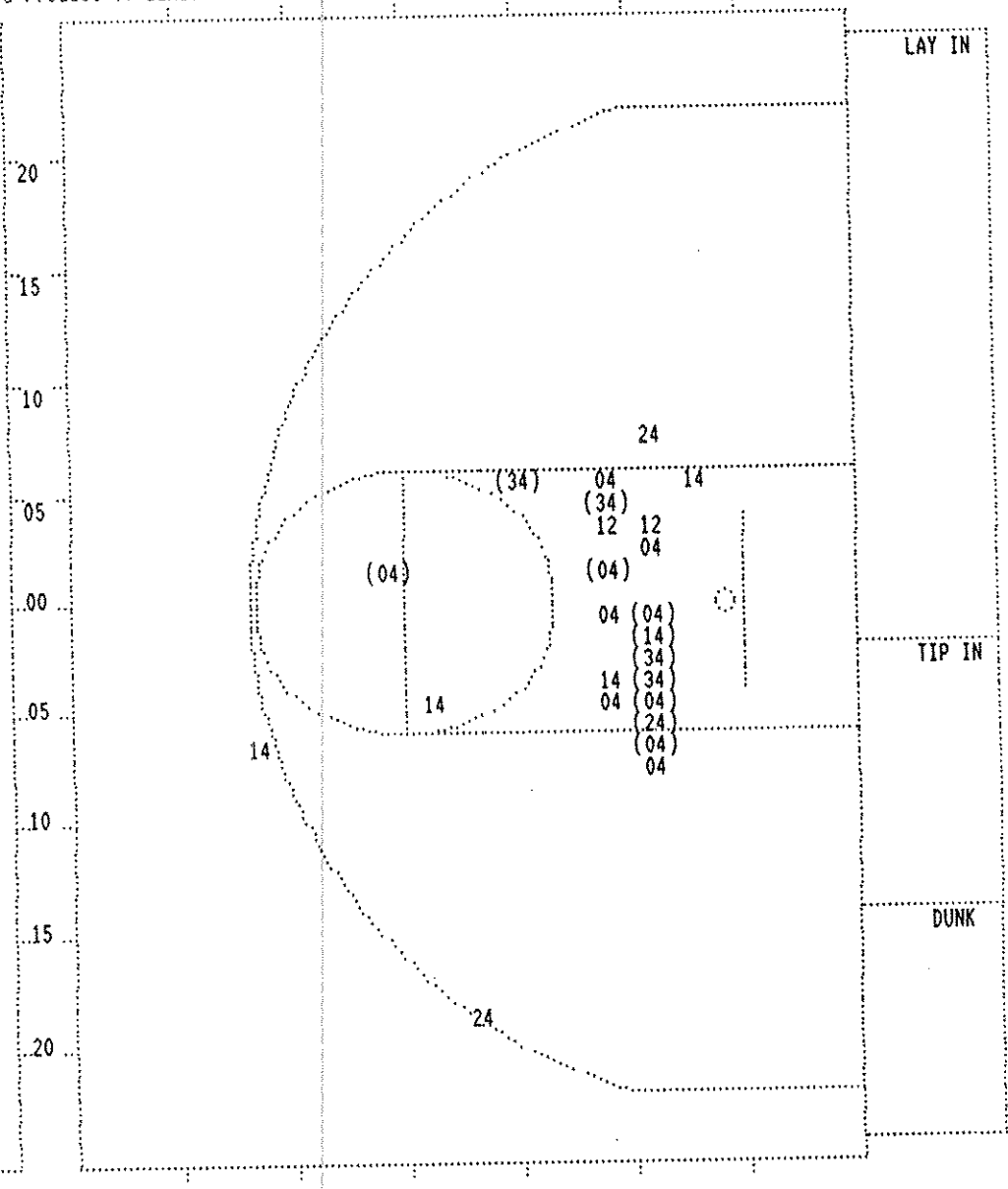
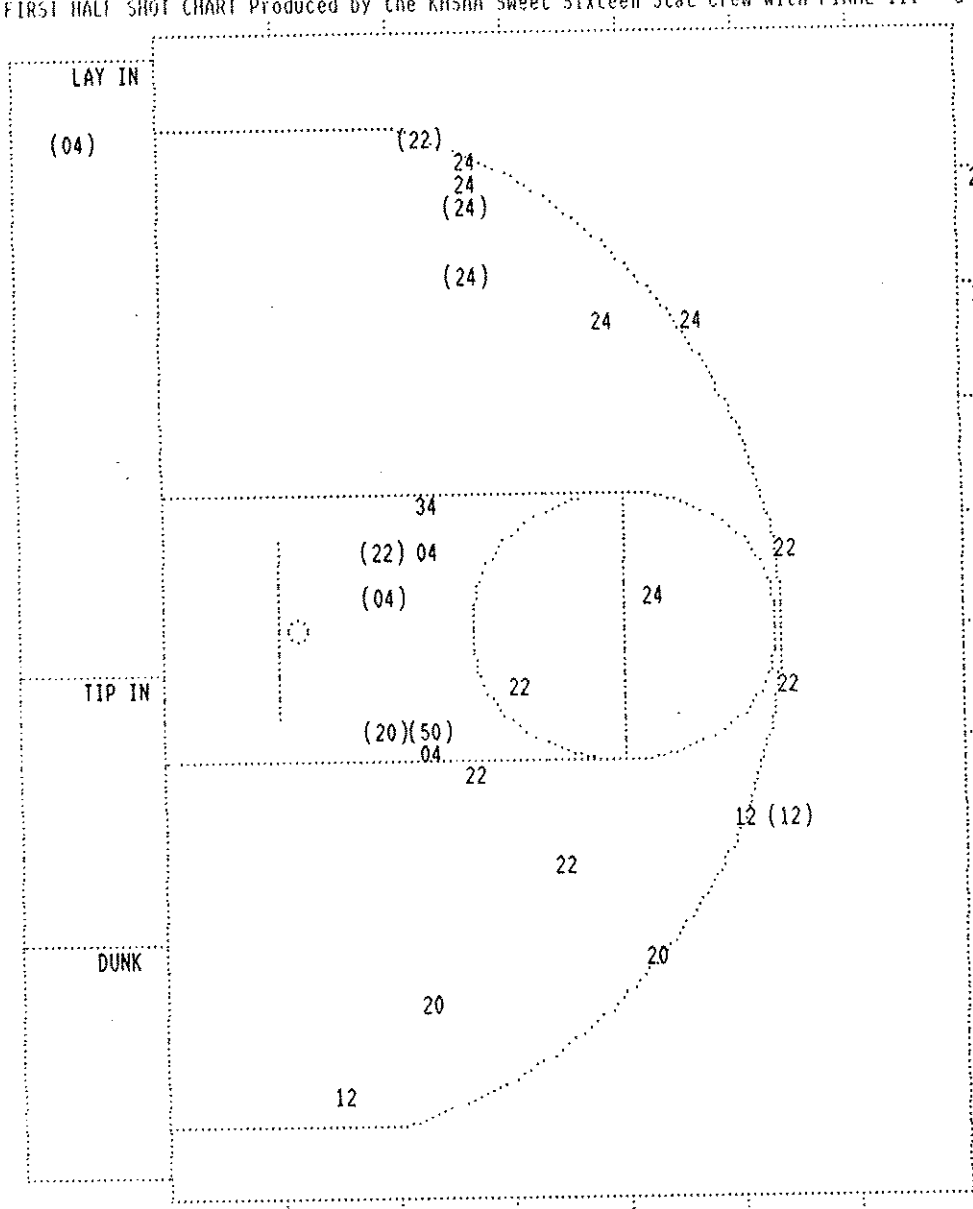
NO.	KNOTT COUNTY CENTRAL	Tot FG		3-POINT		FT	FTA	Rebounds			PF	TP	A	TO	BLK	S	TIME
		FG	FGA	FG	FGA			OFF	DEF	TOT							
24	COUCH, RONDEL	1	3	0	1	2	2	0	5	5	0	4	2	0	0	1	16:00
44	STONE, DAVID	0	0	0	0	0	0	0	1	1	1	0	0	0	0	0	6:47
04	CODY, GEOFF	5	10	0	0	1	2	0	3	3	0	11	0	0	0	0	16:00
12	COUCH, KEVIN	0	2	0	0	0	2	3	3	6	2	0	2	2	0	0	9:02
14	AMBURGEY, BYRON	1	5	0	1	1	2	2	1	3	1	3	1	1	0	1	16:00
34	HALL, SHAWN	4	4	0	0	0	2	0	0	0	1	8	0	0	0	0	9:13
20	GIBSON, RYAN	0	0	0	0	0	0	0	1	1	0	0	2	0	0	0	6:58
TEAM REBOUNDS (INCLUDED IN TOTALS)								5	14	19	5	26	7	4	0	2	80
TOTALS		11	24	0	2	4	10	5	14	19	5	26	7	4	0	2	80
TOTAL FG	1st HALF	3/12	25.0%	2nd HALF	8/12	66.7%	GAME		11/24	45.8%	DEADBALL		REBOUNDS		4		
3-POINT FG	1st HALF	0/1	0.0%	2nd HALF	0/1	0.0%	GAME		0/2	0.0%	REBOUNDS		4				
FREE THROWS	1st HALF	1/4	25.0%	2nd HALF	3/6	50.0%	GAME		4/10	40.0%	REBOUNDS		4				

HOME (Last Name, First)

NO.	CONNER	Tot FG		3-POINT		FT	FTA	Rebounds			PF	TP	A	TO	BLK	S	TIME
		FG	FGA	FG	FGA			OFF	DEF	TOT							
04	FRYMAN, TROY	2	4	0	0	2	2	1	5	6	0	6	1	1	0	0	16:00
22	PITZER, MIKE	2	7	1	3	0	0	0	0	0	2	5	0	0	0	0	8:14
50	RICHARDSON, D.	1	1	0	0	0	0	0	1	1	2	2	0	0	1	0	3:11
12	HURST, JASON	1	3	1	3	1	2	0	1	1	1	4	1	2	0	0	16:00
24	BURKLO, GREG	2	7	1	4	0	0	0	2	2	0	5	0	0	0	0	15:39
34	OSBORNE, ERIC	0	1	0	0	0	0	0	2	2	1	0	1	1	0	0	8:53
20	LAWS, BRANDON	1	3	0	1	0	0	1	0	1	1	2	1	0	1	0	9:34
54	BOWLING, JOHN	0	0	0	0	0	0	0	0	0	0	0	0	0	0	0	2:29
TEAM REBOUNDS (INCLUDED IN TOTALS)								2	11	13	7	24	4	4	2	0	80
TOTALS		9	26	3	11	3	4	2	11	13	7	24	4	4	2	0	80
TOTAL FG	1st HALF	4/14	28.6%	2nd HALF	5/12	41.7%	GAME		9/26	34.6%	DEADBALL		Rebounds		1		
3-POINT FG	1st HALF	2/6	33.3%	2nd HALF	1/5	20.0%	GAME		3/11	27.3%	Rebounds		1				
FREE THROWS	1st HALF	1/2	50.0%	2nd HALF	2/2	100.0%	GAME		3/4	75.0%	Rebounds		1				

OFFICIALS: LYMAN BROWN, J. R. SPALDING, ALT. J. MALLORY SCORE BY PERIODS
 Technicals: None KNOTT COUNTY CENTRAL 7 19 = 26
 CONNER 11 13 = 24

Attendance: 11,450
 COMMENTS: POINTS OFF TURNOVERS SECOND CHANCE POINTS
 KNOTT COUNTY CENTRAL 3 CONNER 2 KNOTT COUNTY CENTRAL 4 CONNER 4
 Produced by the KHSAA Sweet Sixteen Stat Crew with FINAL III - a Product of LEXICON SPORTS™



CONNER					
Player			Player		Player
04 - FRYMAN, TR	2 / 4	50.0%	20 - LAWS, BRAN	1 / 3	33.3%
22 - PITZER, MI	2 / 7	28.5%	34 - OSBORNE, E	0 / 1	0.0%
50 - RICHARDSON	1 / 1	100.0%			
12 - HURST, JAS	1 / 3	33.3%			
24 - BURKLO, GR	2 / 7	28.5%			
Layups	1-9 Ft	10-15 Ft	Over 15 Ft	3 Pointers	Total
1 / 1	4 / 9	0 / 2	1 / 3	3 / 11	9 / 26
100.0%	44.4%	0.0%	33.3%	27.3%	34.6%

KNOTT COUNTY CENTRAL					
Player			Player		Player
24 - COUCH, RON	1 / 3	33.3%			
04 - CODY, GEOFF	5 / 10	50.0%			
12 - COUCH, KEV	0 / 2	0.0%			
14 - AMBURGEY	1 / 5	20.0%			
34 - HALL, SHAW	4 / 4	100.0%			
Layups	1-9 Ft	10-15 Ft	Over 15 Ft	3 Pointers	Total
	9 / 19	2 / 3	0 / 2	11 / 24	
	47.4%	66.7%	0.0%	45.8%	

KNOTT COUNTY CENTRAL "PATRIOTS" vs CONNER "COUGARS"
2nd Half Play by Play

Tip off at 2:30 P.M. on 03/17/93 at BOYS STATE TOURNEY GAME 2
Produced by the KHSAA Sweet Sixteen Stat Crew with FINAL III - a Product of LEXICO

PAGE : 1

KNOTT COUNTY CENTRAL				CONNER			
Player	Team	Score	Time	Player	Team	Score	Time
FRYMAN, TROY, PITZER, MIKE				RICHARDSON, D., HURST, JASON, BURKLO, GREG			
Ball to COUGARS				Ball to COUGARS			
3-5	60.0%	10-28	35.7%	7 ft Left Side Jump shot by FRYMAN, TROY			
2		5		Assist by HURST, JASON			
4-4	100%	5-6	83.3%	FRYMAN, TROY, 2 Free Throws made both			
4-6	66.6%	11-30	36.6%	6 ft Left Side Follow by FRYMAN, TROY			
5-5	100%	6-7	85.7%	FRYMAN, TROY, 1 Free Throw made			
3-4	75.0%	8-9	88.8%	HURST, JASON, 2 Free Throws made both			
2		1		Foul on HURST, JASON			
1		2		Foul on FRYMAN, TROY			
				Sub In: LAWS, BRANDON Out: BURKLO, GREG			
REB: 17 A: 5 BLK: 2 TO: 5 PF: 2				REB: 24 A: 9 BLK: 1 TO: 6 PF: 3			
S: 2 FT: 8-9 88.8% FG: 11-34 32.3%				S: 3 FT: 5-12 41.6% FG: 15-31 48.3%			
No. 1 CONNER				T I M E - O U T			
2-4	50.0%	12-35	34.2%	3 ft Lane SHOT Off Fast Break by RICHARDSON, D.			
3-5	60.0%	13-36	36.1%	6 ft Lane Driving by RICHARDSON, D.			
2		6		Assist by LAWS, BRANDON			
3		3		Foul on PITZER, MIKE			
2-2	100%	10-11	90.9%	RICHARDSON, D., 2 Free Throws made both			
5-8	62.5%	14-42	33.3%	Follow Tip by FRYMAN, TROY			
COUCH, RONDEL, SLONE, DAVID, CODY, GEOFF, COUCH, KEVIN, AMBURGEY, BYRON							
3	7:34	*26-26					
3	6:54			Foul on CODY, GEOFF	1		1
3	6:54	*28-26					
3	6:35	28-29*		3 pt 22 ft Right Angle Jump shot by COUCH, KEVIN	1-3	33.3%	12-26 46.1%
				Assist by AMBURGEY, BYRON	2		8
3	6:14	*30-29					
3	6:13			Foul on COUCH, RONDEL	1		2
3	6:13	*31-29					
3	5:54			Foul on AMBURGEY, BYRON	2		3
3	5:54	*33-29					
3	5:42						
3	5:21	33-31*		6 ft Lane Jump shot by SLONE, DAVID	1-1	100%	13-28 46.4%
3	5:03	33-33*		7 ft Left Side Follow by AMBURGEY, BYRON	2-7	28.5%	14-30 46.6%
3	4:41						
3	4:41						
3	4:41						
3	4:41	33-34*		CODY, GEOFF, 2 Free Throws missed 1st made 2nd	2-4	50.0%	5-12 41.6%
3	4:14	33-36*		Layup Off Fast Break by AMBURGEY, BYRON	3-8	37.5%	15-31 48.3%
				Assist by COUCH, KEVIN	3		9
3	4:10						
3	3:35	*35-36					
3	3:25			Player Control Foul on AMBURGEY, BYRON	3		4
3	3:12	*37-36					
3	2:51						
3	2:34	37-38*		Turnaround Layup by COUCH, RONDEL	2-5	40.0%	16-35 45.7%
				Assist by COUCH, KEVIN	4		10
3	2:10	37-40*		15 ft Lane Jump shot by SLONE, DAVID	2-4	50.0%	17-36 47.2%
				Assist by COUCH, KEVIN	5		11
3	1:29			Player Control Foul on CODY, GEOFF	2		5
3	1:01			Sub In: HALL, SHAWN Out: SLONE, DAVID			
3	0:32	37-42*		8 ft Right Base Line Jump shot by AMBURGEY, BYRON	4-10	40.0%	18-38 47.3%
3	0:32			Foul on COUCH, KEVIN	3		6
3	0:32	*39-42					
3	0:23	39-44*		Layup Off Fast Break by HALL, SHAWN	5-5	100%	19-39 48.7%
				Assist by AMBURGEY, BYRON	3		12
3	0:00	*41-44					

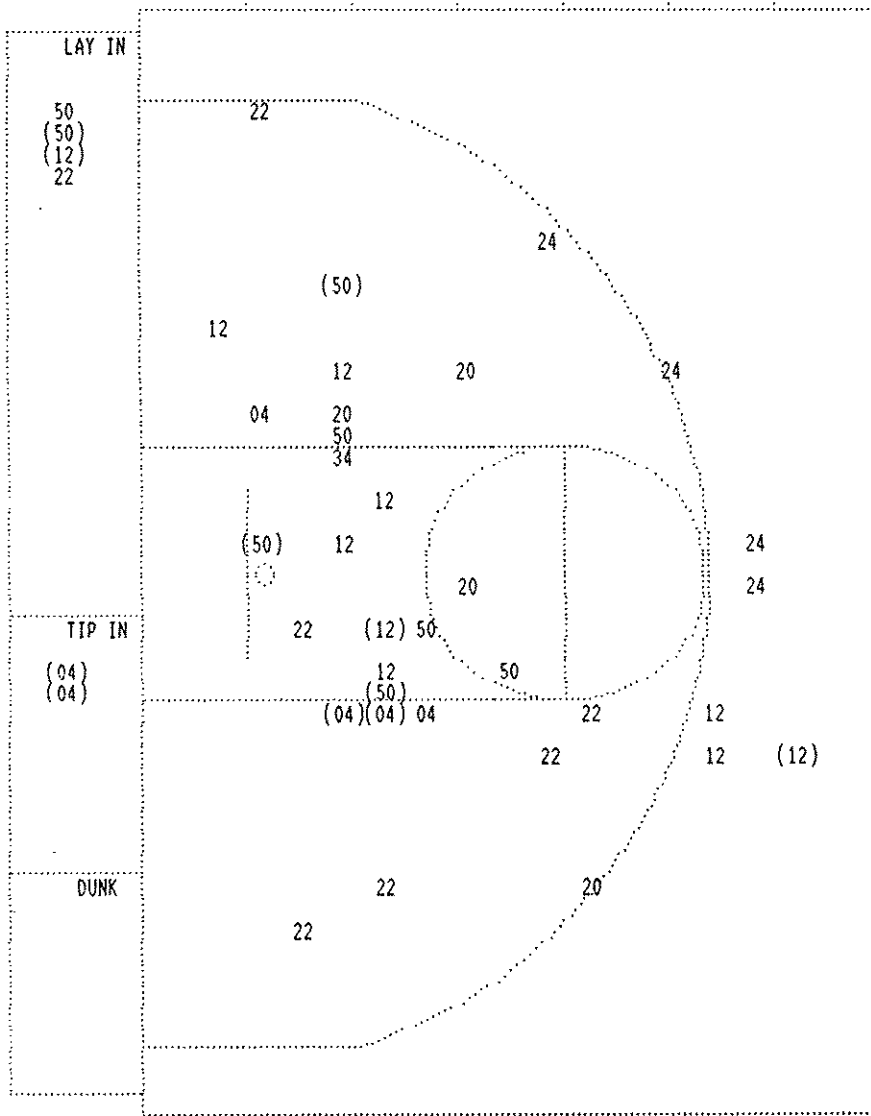
Player	Team	CONNER	Time	Score	KNOTT COUNTY CENTRAL	Player	Team
BURKLO, GREG, PITZER, MIKE, LAWS, BRANDON, FRYMAN, TROY, RICHARDSON, D.					CODY, GEOFF, COUCH, KEVIN, AMBURGEY, BYRON, HALL, SHAWN, COUCH, RONDEL Ball to PATRIOTS		
4-7	57.1%	15-43 34.8%	Layup Off Fast Break by RICHARDSON, D.	4 7:31 *43-44			
				4 5:01	Foul on CODY, GEOFF	3	7
6-7	85.7%	11-13 84.6%	FRYMAN, TROY, 2 Free Throws made 1st missed 2nd	4 5:01 *44-44			
				4 5:01			
			REB: 27 A: 6 BLK: 4 TO: 7 PF: 3 S: 3 FT: 11-13 84.6% FG: 15-46 32.6%	TIME - O U T	KNOTT COUNTY CENTRAL No. 1	REB: 32 A: 12 BLK: 1 TO: 8 PF: 7 S: 3 FT: 5-12 41.6% FG: 19-44 43.1%	
			Sub In: HURST, JASON Out: FRYMAN, TROY	4 4:59	Foul on HALL, SHAWN	2	8
4-4	100%	13-15 86.6%	RICHARDSON, D., 2 Free Throws made both	4 4:59 *46-44			
			Foul on PITZER, MIKE	4 4:54			
			Sub In: FRYMAN, TROY Out: BURKLO, GREG	4 4:54			
				4 4:54	46-45* HALL, SHAWN, 2 Free Throws missed 1st made 2nd	1-4	25.0% 6-14 42.8%
5-9	55.5%	16-48 33.3%	14 ft Right Side Jump shot by RICHARDSON, D.	4 4:43 *48-45			
			Assist by PITZER, MIKE	4 3:58			
			Foul on RICHARDSON, D.	4 3:58	48-47* HALL, SHAWN, 2 Free Throws made both	3-6	50.0% 8-16 50.0%
			Sub In: BURKLO, GREG Out: PITZER, MIKE	4 3:56	Sub In: SLONE, DAVID Out: HALL, SHAWN	3-6	50.0% 20-46 43.4%
				4 3:25	48-49* Turnaround Layup by COUCH, RONDEL		
			Sub In: PITZER, MIKE Out: LAWS, BRANDON	4 3:22			
				4 3:19	Sub In: GIBSON, RYAN Out: COUCH, KEVIN		
2-7	28.5%	17-50 34.0%	Driving Layup by HURST, JASON	4 3:19 *50-49			
			Foul on HURST, JASON	4 2:51			
			Foul on FRYMAN, TROY	4 2:33			
				4 2:33	50-51* CODY, GEOFF, 2 Free Throws made both	4-6	66.6% 10-18 55.5%
				4 2:19	Foul on SLONE, DAVID	2	9
6-8	75.0%	13-16 81.2%	FRYMAN, TROY, 1 & Bonus missed 1st	4 2:07			
				4 2:07			
			REB: 31 A: 7 BLK: 4 TO: 8 PF: 7 S: 3 FT: 13-16 81.2% FG: 17-52 32.6%	TIME - O U T	KNOTT COUNTY CENTRAL No. 2	REB: 34 A: 12 BLK: 1 TO: 8 PF: 9 S: 4 FT: 10-18 55.5% FG: 20-46 43.4%	
				4 1:45	50-53* Driving Layup by AMBURGEY, BYRON	5-13	38.4% 21-47 44.6%
			Foul on HURST, JASON	4 1:26			
				4 1:26	GIBSON, RYAN, 1 & Bonus missed 1st	0-1	00.0% 10-19 52.6%
				4 1:15	Foul on SLONE, DAVID	3	10
8-10	80.0%	15-18 83.3%	FRYMAN, TROY, 1 & Bonus made both	4 1:15 *52-53			
			Foul on BURKLO, GREG	4 1:00			
				4 1:00			
			REB: 32 A: 7 BLK: 4 TO: 9 PF: 9 S: 3 FT: 15-18 83.3% FG: 17-53 32.0%	No. 2 CONNER	TIME - O U T	REB: 34 A: 12 BLK: 1 TO: 8 PF: 10 S: 5 FT: 10-19 52.6% FG: 21-47 44.6%	
				4 1:00	52-54* GIBSON, RYAN, 2 Free Throws made 1st missed 2nd	1-3	33.3% 11-21 52.3%
6-10	60.0%	18-55 32.7%	Follow Tip by FRYMAN, TROY	4 0:44 *54-54			
			Foul on RICHARDSON, D.	4 0:36			
				4 0:35			
			REB: 34 A: 7 BLK: 4 TO: 9 PF: 10 S: 3 FT: 15-18 83.3% FG: 18-55 32.7%	No. 3 CONNER	TIME - O U T	REB: 34 A: 12 BLK: 1 TO: 8 PF: 10 S: 5 FT: 11-21 52.3% FG: 21-47 44.6%	
				4 0:35	GIBSON, RYAN, 1 & Bonus missed 1st	1-4	25.0% 11-22 50.0%
				4 0:00	Rebound by COUCH, RONDEL	0-1	Tot-1 0-1 Tot-35
			Steal by PITZER, MIKE	4 0:00			
				4 0:00	Forced Turnover COUCH, RONDEL	2	9
2-13	15.3%	18-57 31.5%	Turnaround Reverse Lay Up by PITZER, MIKE, missed	4 0:00			
				4 0:00	Rebound by TEAM	0-1	Tot-1 0-2 Tot-36

KNOTT COUNTY CENTRAL "PATRIOTS" vs CONNER "COUGARS"
Overtime Play by Play

PAGE : 4

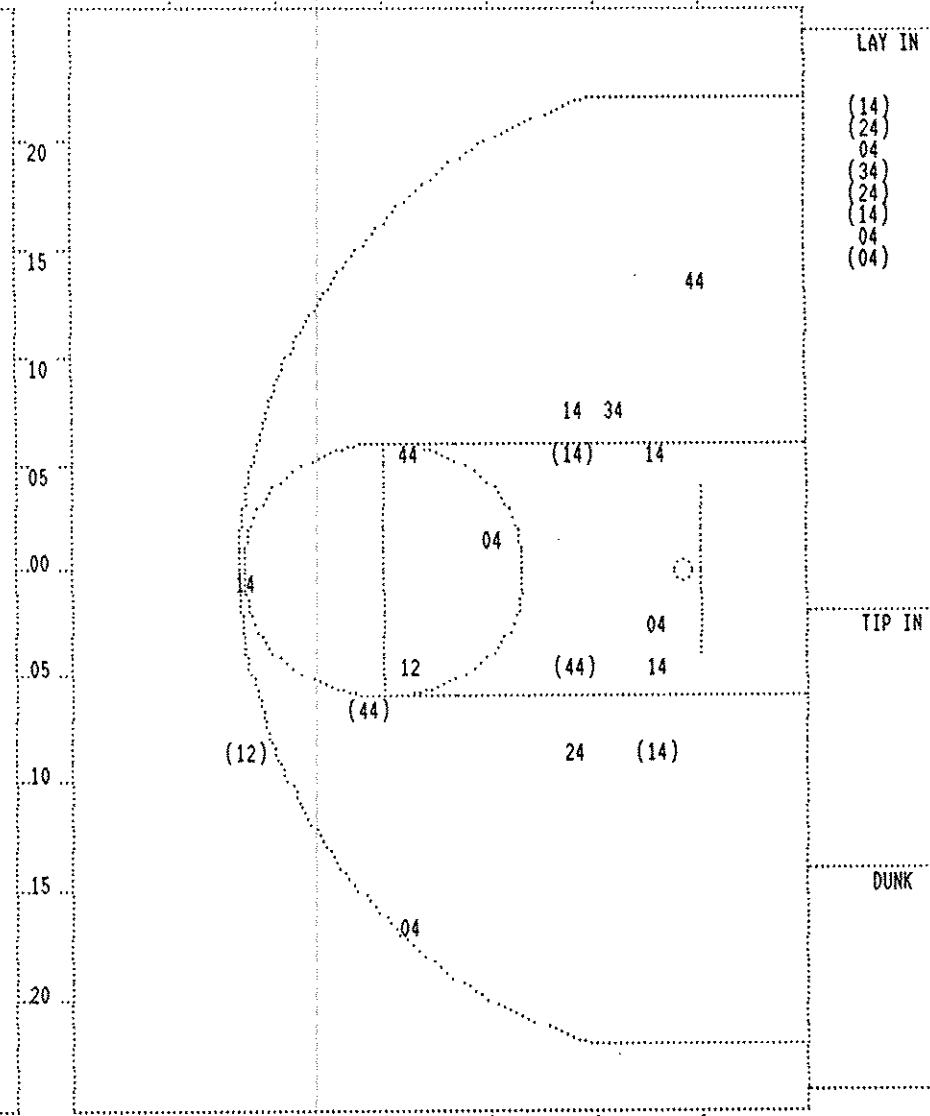
Tip off at 2:30 P.M. on 03/17/93 at BOYS STATE TOURNEY GAME 2
Produced by the KHSAA Sweet Sixteen Stat Crew with FINAL III - a Product of LEXICC

Player	Team	CONNER	Time	Score	KNOTT COUNTY CENTRAL	Player	Team
HURST, JASON	PITZER, MIKE	RICHARDSON, D. ,FRYMAN, TROY,BURKLO, GREG			CODY, GEOFF,SLONE, DAVID,AMBURGEY, BYRON,COUCH, RONDEL,COUCH, KEVIN		
			5 2:50	54-56*	Follow Layup by CODY, GEOFF	6-16	37.5% 22-49 44.8%
3	11	Foul on FRYMAN, TROY	5 2:43				
			5 2:43	54-57*	SLONE, DAVID, 1 & Bonus made 1st missed 2nd	1-2	50.0% 12-24 50.0%
4-6	66.6% 15-20 75.0%	RICHARDSON, D. , 2 Free Throws missed both	5 2:20		Foul on COUCH, RONDEL	2	11
5	12	Foul on PITZER, MIKE	5 2:20				
		Sub In: LAWS, BRANDON Out: PITZER, MIKE	5 2:16				
			5 2:16				
5	13	Foul on RICHARDSON, D.	5 2:16	54-58*	CODY, GEOFF, 1 & Bonus made 1st missed 2nd	5-8	62.5% 13-26 50.0%
		Sub In: OSBORNE, ERIC Out: RICHARDSON, D.	5 2:05				
			5 2:05				
8-11	72.7% 15-21 71.4%	FRYMAN, TROY, 1 & Bonus missed 1st	5 2:05		COUCH, RONDEL, 1 & Bonus missed 1st	2-3	66.6% 13-27 48.1%
2	14	Foul on LAWS, BRANDON	5 1:48		Foul on SLONE, DAVID	4	12
			5 1:48				
			5 1:33				
		REB: 39 A: 7 BLK: 4 TO: 10 PF: 14	No. 1 CONNER	T I M E - O U T	REB: 40 A: 12 BLK: 1 TO: 9 PF: 12		
		S: 4 FT: 15-21 71.4% FG: 18-59 30.5%			S: 6 FT: 13-27 48.1% FG: 22-49 44.8%		
			5 1:33	54-59*	AMBURGEY, BYRON, 1 & Bonus made 1st missed 2nd	2-4	50.0% 14-29 48.2%
			5 1:22		Foul on CODY, GEOFF	4	13
8-13	61.5% 15-23 65.2%	FRYMAN, TROY, 2 Free Throws missed both	5 1:22				
2	15	Foul on OSBORNE, ERIC	5 1:07				
			5 1:07	54-61*	AMBURGEY, BYRON, 1 & Bonus made both	4-6	66.6% 16-31 51.6%
2	16	Foul on BURKLO, GREG	5 0:44				
			5 0:44		AMBURGEY, BYRON, 1 & Bonus missed 1st	4-7	57.1% 16-32 50.0%
3	17	Foul on LAWS, BRANDON	5 0:30				
			5 0:30		COUCH, RONDEL, 1 & Bonus missed 1st	2-4	50.0% 16-33 48.4%
3-11	27.2% 19-64 29.6%	4 ft Lane Jump shot by HURST, JASON	5 0:23	*56-61			
			5 0:23				
		REB: 43 A: 7 BLK: 4 TO: 10 PF: 17	No. 2 CONNER	T I M E - O U T	REB: 44 A: 12 BLK: 1 TO: 10 PF: 13		
		S: 5 FT: 15-23 65.2% FG: 19-64 29.6%			S: 6 FT: 16-33 48.4% FG: 22-49 44.8%		
			5 0:22				
4	18	Foul on FRYMAN, TROY	5 0:22	56-62*	CODY, GEOFF, 1 & Bonus made 1st missed 2nd	6-10	60.0% 17-35 48.5%
4-12	33.3% 20-65 30.7%	3 pt 25 ft Left Angle Jump shot by HURST, JASON	5 0:15	*59-62			
5	19	Foul on FRYMAN, TROY	5 0:08				
		Sub In: COOK, MIKE Out: FRYMAN, TROY	5 0:08				
			5 0:08	59-64*	CODY, GEOFF, 1 & Bonus made both	8-12	66.6% 19-37 51.3%
			5 0:00		Rebound by SLONE, DAVID	0-2 Tot-2	0-3 Tot-45



CONNER

Player	Player	Player
04 - FRYMAN, IR 4 / 6 66.6%	20 - LAWS, BRAN 0 / 4 0.0%	
22 - PITZER, MI 0 / 7 0.0%	34 - OSBORNE, E 0 / 1 0.0%	
50 - RICHARDSON 4 / 8 50.0%		
12 - HURST, JAS 3 / 10 30.0%		
24 - BURKLO, GR 0 / 4 0.0%		
Layups	1-9 Ft	10-15 Ft
4 / 6 66.7%	5 / 16 31.3%	1 / 8 12.5%
		Over 15 Ft
		0 / 1 0.0%
		3 Pointers
		1 / 9 11.1%
		Total
		11 / 40 27.5%



KNOTT COUNTY CENTRAL

Player	Player	Player
24 - COUCH, RON 2 / 3 66.6%	34 - HALL, SHAW 1 / 2 50.0%	
44 - SLOANE, DAV 2 / 4 50.0%		
04 - CODY, GEOFF 1 / 6 16.6%		
12 - COUCH, KEV 1 / 2 50.0%		
14 - AMBURGEY 4 / 8 50.0%		
Layups	1-9 Ft	10-15 Ft
6 / 8 75.0%	3 / 10 30.0%	1 / 4 25.0%
		Over 15 Ft
		0 / 1 0.0%
		3 Pointers
		1 / 2 50.0%
		Total
		11 / 25 44.0%